

# CUBITAN FOR WOUND MANAGEMENT

NO ONLINE  
APPROVAL  
REQUIRED



**Wound healing** requires key nutrients such as protein, energy, zinc and vitamin C<sup>1</sup>. If nutritional requirements are not met, there is an increased risk of wound infection and delayed healing<sup>1</sup>.

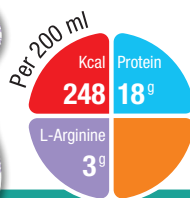


**Arginine** is an amino acid that plays a significant part in the wound healing process<sup>2</sup>.

The role of oral nutritional supplements (ONS) containing arginine has been recognised by Irish & International wound management guidelines<sup>2,3</sup>



**CUBITAN** is:



- The **ONLY**\* high protein ONS containing added free **arginine**
- The **ONLY**\* ONS indicated for the dietary management of chronic wounds
- The **HIGHEST**\* Zinc Vitamin C & Vitamin E content of any high protein ONS

Available in three flavours: Strawberry, Chocolate & Vanilla



**STUDIES** on Cubitan have shown:

- ✓ **Accelerated** management of wounds in both malnourished & non-malnourished individuals<sup>4-6</sup>
- ✓ Greater **reduction in wound area** compared with a high protein ONS<sup>5</sup>
- ✓ Reduction in wound **infection rates**<sup>5</sup>
- ✓ **Reduction in dressings & dressing changes** per week<sup>5,6</sup>
- ✓ **Cost effective** in pressure ulcer care<sup>7</sup>

To order free samples, please visit [nutricia.ie](http://nutricia.ie) or call Freephone 1800 923 404

## References

1. Quain & Khardori, Wounds. 2. Health Service Executive (HSE). Office of the Nursing & Midwifery Service Director (2018) 3. European Pressure Ulcer Advisory Panel, National Pressure Injury Advisory Panel and Pan Pacific Pressure Injury Alliance, Emily Haesler (Ed.) (2019) 4. Cereda, et al., The Journal of Nutrition, Health & Aging (2017).
5. Cereda et al., Annals of Internal Medicine (2015). 6. Van Anholt et al. Nutrition (2010).
7. Cereda et al., Clinical Nutrition (2017) 8. Neyens, et al., J Gerontol Geriatr (2017).
9. CKD Work Group, Kidney Int, supplement (2013)

\*MIMS January 2022. Product comparisons per 100ml based on information obtained from: [www.abbottnutrition.ie](http://www.abbottnutrition.ie); [www.nualtra.com](http://www.nualtra.com); [www.fresenius-kabi.com/ie](http://www.fresenius-kabi.com/ie) accessed 30th January 2022.

~Product can be provided to patients upon the request of a Healthcare Professional. They are intended for the purpose of professional evaluation only.









The information is intended for healthcare professionals only. Cubitan is a Food for Special Medical Purposes for the dietary management of chronic wounds and must be used under medical supervision. Accurate at time of publication January 2022.



**NUTRICIA**  
**Cubitan**

# CUBITAN USAGE GUIDE

Cubitan is the **ONLY** oral nutritional supplement indicated for the dietary management of chronic wounds\*  
**Suitable for all wounds:** pressure ulcers, venous leg ulcers, arterial leg ulcers and diabetic foot ulcers<sup>8</sup>

Stage 1 Pressure Ulcer	Stage 2 Pressure Ulcer	Stage 3 Pressure Ulcer	Stage 4 Pressure Ulcer
or	or	or	or
Subcutaneous wound	Superficial wound	Superficial-deep wound	Deep cavity/high exudate
			
			
<b>1-2 Bottles</b> Per day	<b>2 Bottles</b> Per day	<b>2 Bottles</b> Per day	<b>3 Bottles</b> Per day
<b>A <u>minimum of 8 weeks supplementation</u> recommended<sup>6</sup></b>			

## IS CUBITAN SUITABLE FOR THOSE WITH...

- ✓ **Obesity?** **YES** Obese patients should aim for weight maintenance during wound healing and should not aim for weight loss until their wound is fully healed<sup>2</sup>
- ✓ **Diabetes?** **YES** Monitor blood sugars. Contact a dietitian or GP if any clinical concern.
- ✓ **Dysphagia?** **YES** Cubitan can be thickened in line with SALT recommendations.
- ✓ **Kidney Disease?** **YES** Suitable for patients with **stage 1-3 kidney disease**. However, a very high protein intake should be avoided for those at risk of Chronic Kidney Disease progression.<sup>9</sup>

### Cubitan can be given in addition to other supplements.

If the patient is unlikely to tolerate a high volume of supplements, consider substituting one of the oral nutritional supplements for Cubitan.

**Use with Caution:**  
 End Stage Renal Disease  
 Children 3-17 years.

**Not Suitable for:**  
 Children under 3 years  
 Individual's with cow's milk protein allergy or galactosaemia

To order free samples, please visit [nutricia.ie](http://nutricia.ie) or call Freephone 1800 923 404