

TRUST NEOCATE

For The Effective Management of Cow's Milk Allergy

THE UK'S NO.1
AMINO ACID-BASED
FORMULA*



This information is intended for Healthcare Professionals only.

Neocate is a Food for Special Medical Purposes for the dietary management of Cow's Milk Allergy, Multiple Food Protein Allergies and other conditions where an amino acid based formula is recommended. It must be used under medical supervision after full consideration of all feeding options, including breastfeeding.

Accurate at time of publication: February 2020

*IMS Data September 2019

NUTRICIA
neocate[®]

Identifying Cow's Milk Allergy (CMA)

Cow's Milk Allergy is an allergic reaction to the **protein in cow's milk**, which can affect both formula-fed and breastfed infants. CMA is the most common food allergy in infants and young children, affecting **2-5% of infants**¹⁻⁵.

Around half of CMA cases seen in the UK may present with delayed reactions⁶, frequently with gastrointestinal symptoms, making it challenging to diagnose¹.

Recognising common symptoms and following relevant CMA guidelines¹³⁻⁴, can support a timely diagnosis and appropriate management.

Example CMA Symptoms

Consider **CMA** in infants who exhibit **2 or more persistent and/or severe symptoms** from the list below¹³⁻⁴.

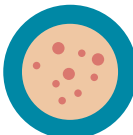
GASTROINTESTINAL

- diarrhoea
- constipation
- blood in stools
- vomiting
- reflux disease/GORD
- abdominal pain



DERMATOLOGICAL

- moderate persistent eczema
- urticaria
- rashes
- severe atopic eczema
- angioedema



RESPIRATORY

- wheezing
- chronic coughing
- acute rhinitis
- respiratory distress



OTHER SYMPTOMS

- unsettled
- feed refusal
- taking a long time to feed
- inconsolable crying
- anaphylaxis
- faltering growth



Care should be taken in interpreting non-specific symptoms to avoid over-diagnosis of CMA.

CMA is difficult to diagnose because symptoms can easily be mistaken for other common conditions in infants.



4 MONTHS Average time to diagnose after initial presentation to HCP⁷



>18 VISITS Average number of healthcare visits per patient to reach a diagnosis of CMA⁷

Earlier diagnosis is a factor indicating a good prognosis and may lead to a shorter duration of nutritional management⁸.

Managing CMA

Breast milk is the best feeding option for all infants, including those with CMA. Support to continue breastfeeding and follow a cow's milk exclusion diet should be provided to mothers of symptomatic breastfed infants¹³⁻⁴.

In non-breastfed infants, or those requiring a top-up formula, CMA may be managed with a hypoallergenic formula¹³⁻⁴. Hypoallergenic formulas include extensively Hydrolysed Formula (eHF) and Amino Acid-based Formula (AAF)



AMINO ACID-BASED FORMULA (AAF)

No interaction with the immune system, based on 100% free amino acids.



EXTENSIVELY HYDROLYSED FORMULA (eHF)

May have some interaction with the immune system, based on extensively hydrolysed cow's milk proteins.



WHOLE PROTEIN / STANDARD INFANT FORMULA

Not suitable for CMA, based on intact cow's milk protein which interacts with the immune system.



Between 10% - 40%^{2,9} of infants (with uncomplicated to more complex CMA) may continue to react to an eHF due to residual cow's milk peptides in these formulas interacting with the immune system.

Red Flag Indicators : When To Prescribe An AAF

1

Infants Reacting To An Extensively Hydrolysed Formula¹⁻³

2

Faltering Growth¹⁻³

3

Severe Gastrointestinal Allergies¹⁻³

4

Anaphylaxis¹⁻³

*In particular with multisystem involvement (GI tract and/or skin) and multiple food elimination

TRUST THE NEOCATE RANGE OF AAFs



Neocate LCP | From Birth

The UK's No. 1 Infant AAF

The only AAF with over 35 years of heritage in the management of CMA and Multiple Food Protein Allergies (MFPA).

- ✓ Fast & effective resolution of CMA symptoms in 3 -14 days¹⁰⁻¹¹
- ✓ Supports growth¹²⁻¹³
- ✓ Supported by extensive clinical evidence
- ✓ Hypoallergenic
- ✓ Produced in Liverpool, UK



Neocate Syneo | From Birth

The Latest Innovation in CMA Management

Clinically proven to rebalance the gut microbiota of CMA infants¹⁴⁻¹⁶ closer to that of healthy breastfed infants¹⁴

- ✓ The only AAF with pre- and probiotics
- ✓ Contains probiotic *Bifidobacterium breve* M-16V
- ✓ Contains prebiotic fibres, to act as a substrate for *Bifidobacteria*¹⁸
- ✓ Helps rebalance the gut microbiota¹⁴⁻¹⁶ closer to that of healthy breastfed infants¹⁴
- ✓ With the benefits of the Neocate range:
 - Effective resolution of CMA symptoms¹⁴⁻¹⁶
 - Supports normal growth¹⁶⁻¹⁷
 - Nutritionally complete
 - Hypoallergenic
- ✓ Produced in Liverpool, UK

NEXT STEPS WITH THE NEOCATE RANGE



Neocate Junior | Aged 1-10

The Best Tasting AAF for Children Over 1 Year¹⁹

For children aged 1-10 years with CMA and Multiple Food Protein Allergies, trust Neocate Junior to provide great tasting tailored nutrition

- ✓ Available in 3 flavours - Unflavoured, Strawberry and Vanilla
- ✓ Excellent compliance²⁰
- ✓ Tailored nutrition for the changing nutritional requirements of children over 1 year²¹
- ✓ Produced in Liverpool, UK

1. Luyt et al. Clin Experimental Allergy. 2014 ;44 : 642-672 2. Meyer et al. Pediatr Allergy Immunol. 2018;29:689-704 3. Fox et al. Clin Transl Allergy (2019); 9: 40 4. Koletzko et al. JPGN. 2012 ; 2 : 221-229 5. Grimshaw et al. Clin Transl Allergy. 2016 ; 6 :1 6. Schoemaker et al. Allergy. 2015 ;70 : 963-972 7. Sladkevicius et al. J Medical Economics. 2010;13(1):119-128 8. De Boissieu et al. J Pediatr. 2002; 141(2):271-273 9. Hill et al. Clin Exp Allergy. 2007;37(6):808-822 10. De Boissieu et al. J Pediatr. 1997; 131: 744-747 11. Vanderhoof et al. J Pediatr. 1997; 131:741-744 12. Niggemann al. Pediatr Allergy Immunol. 2001;12(2):78-82 13. Isolauri et al. J Pediatr. 1995; 127(4):550-557 14. Candy et al. Pediatr Research. 2018;83(3):677-686 15. Fox et al. Clin Transl Allergy. 2019;9:5 16. Burks et al. Ped Allergy Immunol. 2015;26:316-22 17. Harvey BM et al. Pediatr Res. 2014;75:343-51 18. Gibson et al. J Nutr. 1999;129(7 Suppl):1438S-41S. 19. Data on file, May 2016 & January 2017 20. Clinical data on file, May 2016 21. Nutritional Requirements for Children in Health and Disease, Great Ormond Street Hospital for Children, 7th ed. 2018.

SUPPORT FOR YOU

PULSELEARNING
CPD for GPs

Module Title: Key Questions on Cow's Milk Protein Allergy (CMPA)
1.5 CPD hours

Module Summary

Created in partnership with GP Dr Helen Howells, the module focuses on the presentation of CMPA, distinguishing CMPA from gastro-oesophageal reflux disease (GORD) and when to refer to secondary care.

Learning Objectives

This module will help to bring you up to date on CMPA diagnosis and management including:

- Distinguishing between IgE- and non-IgE-mediated CMPA.
- Distinguishing CMPA from GORD and colic.
- Which formulas to prescribe and when to re-challenge an infant with cow's milk.
- Using a milk ladder to re-challenge an infant with cow's milk.

Author

Dr Helen Howells is a GP and chair of the British Society for Allergy and Clinical Immunology's primary care group.

Complete this module today by logging into: www.pulse-learning.co.uk

Search Module: Key Questions on Cow's Milk Protein Allergy (CMPA)

This module has been initiated and funded by Nutricia.

If you would like to learn more about allergy research visit www.nutriciaallergy.com or contact your local paediatric specialist to find out more.

NUTRICIA
Neocate



SUPPORTING YOU TO SUPPORT YOUR PATIENTS



Order a **FREE SAMPLE**[†] Direct To Your Patients Today

Request a sample to be delivered direct to a patient by visiting www.nutriciaproducts.com/samples

Further information for HCPs:
www.neocate.co.uk or 01225 751 098

[†]Product can be provided to patients upon the request of a Healthcare Professional. They are intended for the purpose of professional evaluation only.



MyNeocate App

Parents can download the MyNeocate App from the Apple App Store for tools, tips, recipes and articles to help them manage their child's allergy.

myneocate.co.uk

A support website for parents of children who have been prescribed Neocate.



cowsmilkallergy.co.uk

A website dedicated to giving your patients all the information they need on Cow's Milk Allergy.